

“Fulcrum Navigator” GPS Navigation System



LCD Display



Transponder



LCD Display Mounted on the Transmitter



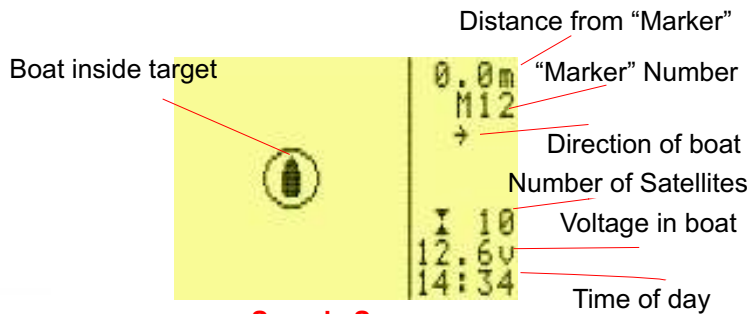
Navigator Power Supply & Charger

The Fulcrum Navigator is a satellite navigation system designed for baitboats of any manufacture*. as well as a number of other functions, it replaces physical marker buoys with an invisible electronic version. It can store and retrieve up to seventy five electronic markers which can then be used to guide your baitboat to a spot with high precision and ease - time and again, day or night on any water in the world.

The system comprises of two parts, a boat transponder which contains the satellite receiver and a shore based handset mounted LCD display. The boat transponder is usually powered directly by the boat and the LCD display by internal rechargeable NMH batteries.

The “Transponder” uses satellites to find its location on earth and sends the information to the LCD display on the shore. The “LCD Display” then calculates where the boat is, relative to the ‘marker’, and provides simple distance and direction indications as to how to get to the ‘marker’. In addition to this, the display indicates the voltage of the boat battery together with an ability to warn you when the boat battery is getting low.

Another very useful feature on the display is an arrow indicating which direction the boat is heading - obvious at fifty yards, but not quite so easy at two hundred in poor light.



Sample Screen

The “Navigator Power Supply” is designed to be used in conjunction with either the “Procat” or another manufacturers boat. The power supply is fully rechargeable and is attached to a horizontal surface on the top of the boat via the use of self adhesive strips (supplied).