

Angling Technics Limited

Graphic Sonar

Thank you for purchasing this highly advanced fishing aid. Before you use it, please take a few moments to read these instructions.

Overview

This graphic sonar is fully compatible with the existing Angling Technics echo sounder system and will produce a display which will move from right to left and showing an image which represents a cross section of the bed of the water which the boat is operating over.

The image differentiates between even and uneven surfaces. A thick dark area represents uneven surfaces. An uneven surface often represents weed as opposed to sand or gravel.

Occasionally a 'contact' symbol will appear above the bed. This indicates that something – possibly a fish, is between the boat and the bed surface. It could also indicate a mid-water drifting weed, branch of a submerged tree or other object.

Specifications

Weight – 500g

Dimensions - 20cm x 11cm x 8cm

LCD dimensions – 128 x 64 pixels

LCD type – Backlit STN

Radio frequency – 458Mhz - EN 300 220-2 V2.1.1
EN301 489-03 V1.4.1

Maximum depth – 12 metres.

Range - 200 metres

Running time – 25 hours (10 hours use with back-light).

Recharge time – 15 hours

Battery type - Rechargeable Nickel Metal Hydride

Viewing method -bankstick fixing or handheld.

Zoom levels – 4

Speed levels – 4

Scale – feet or Metres

Battery condition indicator levels - 6

Contents of kit

Handheld graphic sonar receiver

Screw on aerial (Boat)

Screw on aerial (Handset)

Protective bag

Instructions

Guarantee

Operation

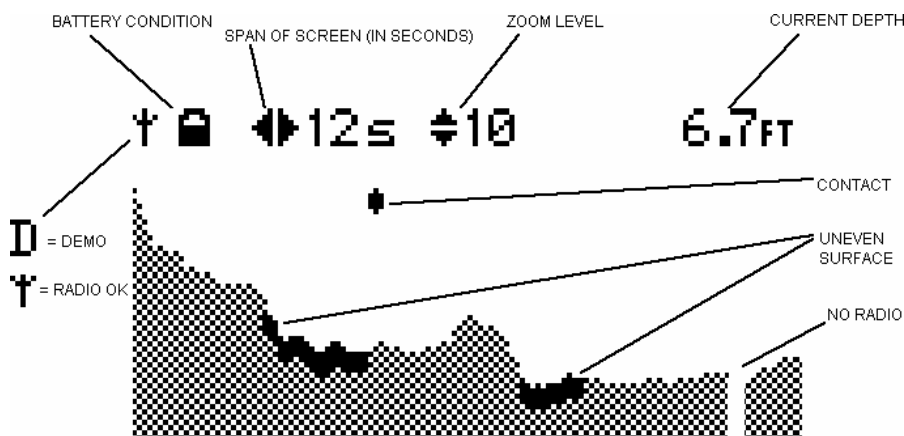


ON / LIGHT / OFF

FEET / METRES

SPAN SPEED

ZOOM



A single press and release of the top yellow button will turn **on** the unit.

A second press of the yellow button will activate the back-light.

A third press will turn the unit **off**.

To activate the demonstration mode, immediately after turning on the unit (but before the start up displays are complete) press and hold the zoom button until the unit beeps.

During the demo mode the screen will scroll continuously showing an example bottom profile. The back-light will be activated during this time and only the on/off button is functional and if pressed will turn the unit off.

Operation of the **feet/metres** button will toggle between the two scales and change the zoom units accordingly.

The span **speed** can be selected from 72, 36, 24 and 12 seconds.

The **zoom** level can be selected from 80, 40, 20 and 10 feet or from 24, 12, 6 and 3 metres depending on the scale selected.

The symbol on the top left of the screen will show a constant aerial symbol if there is a good radio link. It will disappear or flash if there is a poor radio link or is interference.

If the unit is in demo mode the aerial symbol will be replaced with a 'D'.

If there is no echo received from the transducer then a horizontal line will appear just below the symbols.

The screen scrolls from right to left and hence the position of the boat is always described as being at the top right of the LCD.

If no 'bed' is visible on the screen then check the top right current depth to make sure it is not a larger number than the zoom level, i.e. the 'bed' is off screen, and alter the zoom accordingly.







If a sudden disappearance of the bed is noted, this may be due to a radio glitch either because the boat is out of radio range or because of interference from radio linked bite alarms operating on the same radio frequency.

The settings (feet, meters, zoom and span speed) which are present when switched on will be the same as those when the unit was last switched off.

Remember to attach both screw on aerials, one to the Handset and the other to the boat.

Battery charging

The Graphic Sonar uses advanced Nickel Metal Hydride (NMH) battery technology, which eliminates the 'memory effect' present in less advanced systems. This means that the unit can be recharged at any stage without first discharging the unit. The charger supplied with the boat for the handset/transmitter is also for charging the Graphic handset. The battery condition indicator shows the operating time left and how long to charge for as follows:

	Running time left (No backlight)	Running time left(with backlight)	Recharge time
	25 hours	10 hours	-
	20 hours	8 hours	3 hours
	15 hours	6 hours	6 hours
	10 hours	4 hours	9 hours
	5 hours	2 hours	12 hours
	none	none	15 hours

In addition to the symbol, the unit will give an audible beep to warn of impending battery exhaustion.

Do not leave the unit on charge for longer than 24 hours as this will reduce the life of the battery.

The unit must be charged at least every three months in order to ensure continuing battery function.

Software

Occasionally there will be upgrades available for the software within the unit. Details will be available online from www.anglintechnicsbaitboats.co.uk or from Angling Technics on Tel: +44 (0)1666 575144. Fax: +44 (0) 1666 576300

Care of your equipment

Although the unit is well protected from water it is always wise to keep it warm and dry. Do not store it in a cold, damp location or anywhere the screen can be scratched.

If you suspect a fault with the system then, before contacting us, please try again at another location well away from the area to eliminate any local source of problems.

Guarantee

Your graphic sonar system is guaranteed for 12 months from the date of purchase. The guarantee covers any defects arising from faulty material or workmanship; it does not cover damage arising from improper use, breakage, or normal wear of the system or associated equipment. The guarantee is invalidated if unauthorised persons undertake repairs or modifications. By returning your guarantee slip you will help us to keep you informed of software upgrades and other products you may find of interest.

To register your guarantee, please complete ALL of the following slip in BLOCK CAPITALS and return to:
Angling Technics Limited , Unit 5 , Kemble Business Park, Crudwell, Malmesbury, Wiltshire, SN16 9SH,
England Tel/ Fax: +44 (0) 1666 575144

Graphic Sonar Guarantee

Serial No.:

Software version:

Name:

Address:

Telephone:

Signed:

Date of Purchase:

Place of Purchase: