



ULTRACAT S BAIT BOAT

1. Ultracat S Bait Boat Pack Contents

All Fishing Bait Boats come standard with the following items:

1. **Fishing Bait Boat – 1 pc**
2. **2.4GHz Remote Control (Handset) – 1 pc**
3. **12V Rechargeable Boat Battery – 2 pcs**
4. **AC 110V–240V to DC 12V Home Charger for Boat Battery – 1 pc**
5. **Type-C Charging Cable for Handset – 1 pc**
6. **Carrying Bag – 1 pc**
7. **Boat Antenna – 1 pc**

Optional Accessories (Not Included)

1. **Spreader**
2. **Wireless Fish Finder**
3. **Wincam Camera System**
4. **Handset Packing Box**

2. Technical Specification

Product Name/Model: Ultracat S

Boat Weight: 5.65kg – excluding batteries

Bait load capacity Max.: 2.5kg

Hoppers: 1 big hopper

Motor: Energy Saving Brushless Motor ,Ultra-quiet

Sailing Speed: No-load - 70 M/min, Full load - 60 M/min

Remote Distance: 400~500 Meter/Remote Frequency: 2.4GHz

Battery For Boat: Lithium battery/Power Supply: 12V 12Ah/Power voltage DC 12V

Sailing Time: 3 Hours

Charger voltage & Frequency: AC110V-240V/ 50/60 HZ

Battery For Remote Control Handset: 4000mAh lithium battery

Dimensions (L x W x H): 525mm * 375mm * 235mm /Carton size (L x W x H): 585mm*
430mm* 340mm

3. Specification and Features

The bait boat is equipped with the following outstanding features:

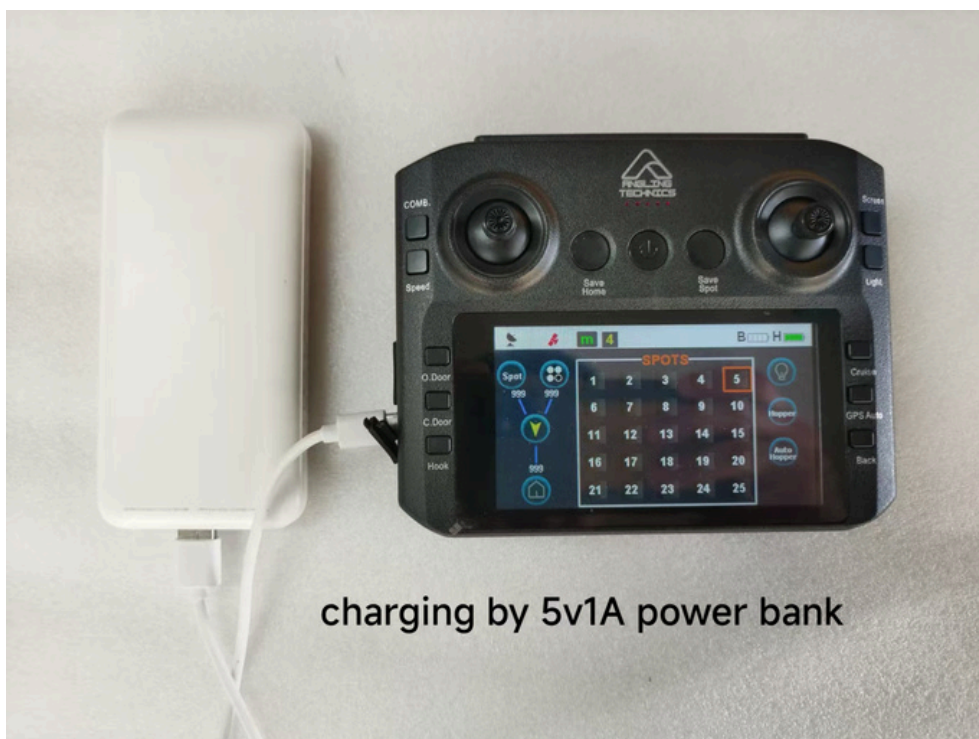
1. 2.4GHz Radio System. Offers excellent range (400–500m depending on weather and environmental conditions) and is highly resistant to interference.
2. Built-In Fail-Safe Return. If the handset signal is lost for 30 seconds, the boat will automatically return to the start point (home), preventing loss of the boat.
3. Dual Direct-Drive Motors. Two high-quality direct-drive motors and propellers provide powerful propulsion, excellent efficiency, long battery life, and smooth, quiet operation.
4. Weed Guards. Durable weed guards help prevent tangles from weeds and fishing lines.
5. Waterproof on and off rocker switches.
6. Ultra-High-Intensity LEDs
7. Low-Power Auto-Return. When battery power is low (battery icon turns red and buzzer alerts on the handset), the boat will automatically return to the start point automatically.
8. One-Key Return Function. At any time during operation, a single short press of the return key will command the boat to automatically return to the start point.

4. Charging the Battery Handset with Home Charger

When the handset battery is low, a buzzer will sound and the battery icon on the display will flash and turn red. At this point, the handset cannot be used and must be recharged.

To charge the remote control (handset):

1. Connect a Type-C cable to a 5V 1A charger or plug the cable into a power bank.
2. During charging, the display will show the battery icons, which will move continuously to indicate charging is in progress.
3. When charging is complete, the battery icons will become full and turn green, and the handset will sound a buzzer to confirm the batteries are fully charged



5. Charging the Boat Battery with the Home Charger

When the boat battery voltage becomes low, the handset will sound a buzzer and the boat will automatically return to the home (start) point. The boat battery icon on the handset will flash and turn red. At this stage, the battery must be recharged and cannot be used further.

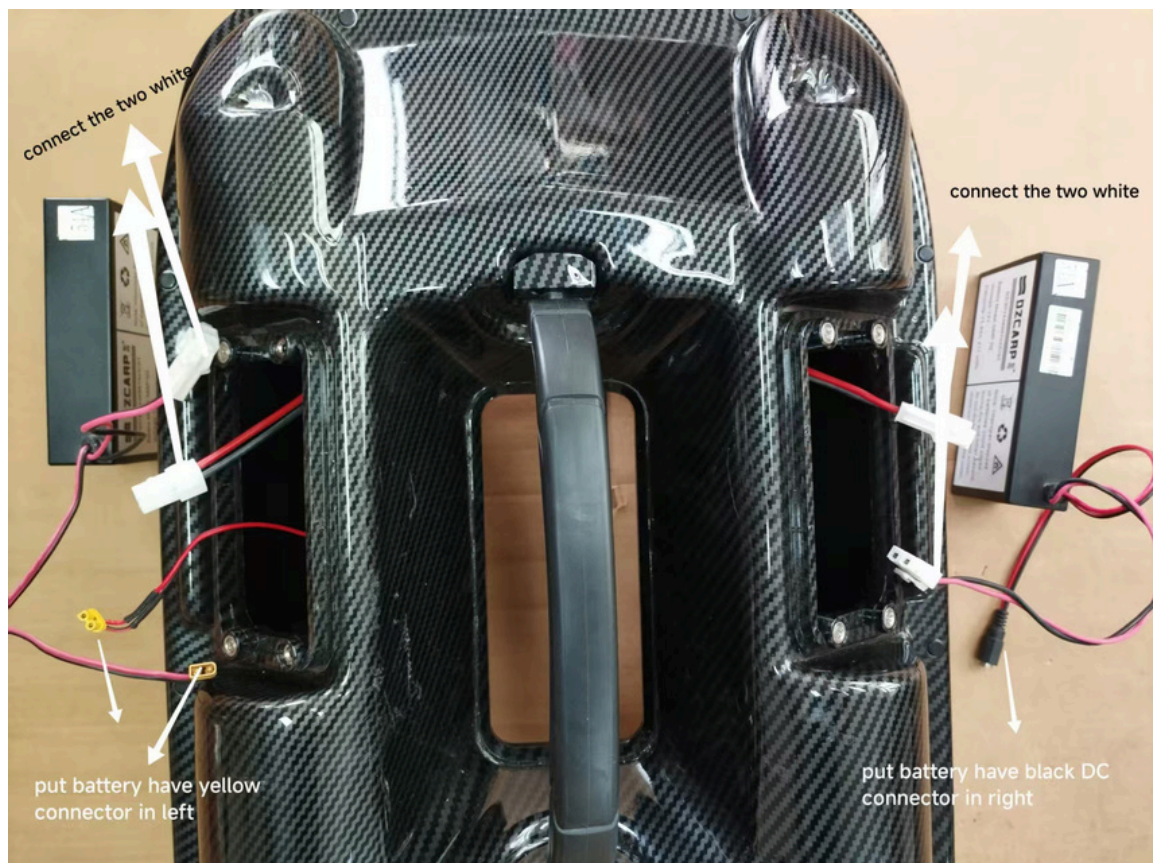
To charge the battery:

1. Remove the battery from the boat and connect the battery charger socket to the connector on the home charger.
3. Plug the charger into a wall socket.
4. The red light on the charger will turn on to indicate charging.
5. When the light turns green, the battery is fully charged.

NOTE : Charging the Battery While It Is Still Inside the Boat

If you prefer not to remove the battery from the boat:

1. Ensure the boat's on/off switch is turned OFF.
2. Disconnect the yellow connector located on the left side of the boat (see photo).
3. Connect the charger as required to begin charging.

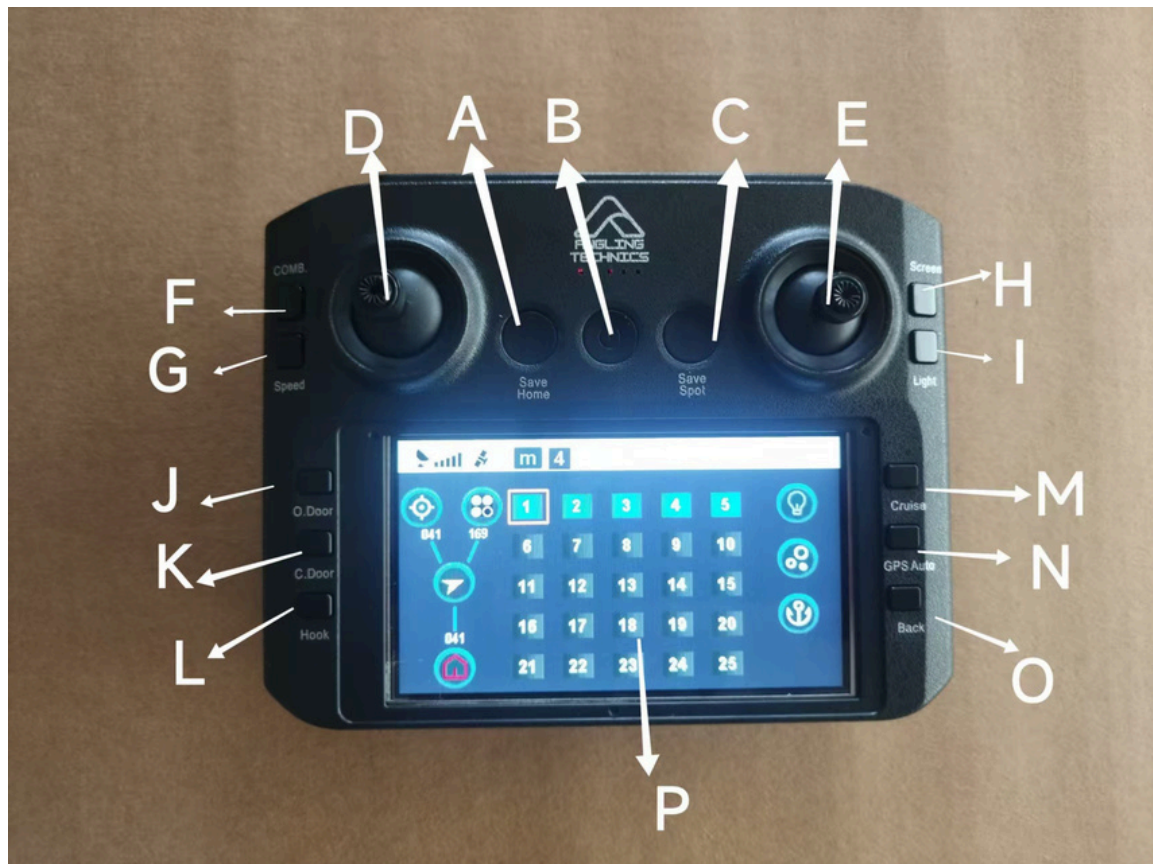


6. Operation

1. Front Light – Controlled by the remote handset.
2. Battery Cover – Provides access to the boat's battery compartment.
3. Handle – For carrying and lifting the boat safely.
4. Fishfinder Antenna (Optional) – Only included if the fishfinder option is purchased.
5. Battery Monitor – Displays battery voltage (12.6V = full, 9.6V = recharge required).
6. Front Light - controlled by remote handset.
7. Battery Cover
8. Boat Antenna – Ensures stable communication between the boat and handset.
9. Power Switch – Turns the boat on or off.
10. Rear Light – Controlled by the remote handset.
11. Weed Guard



7. Handset for UltraCat S



Controller Functions

A. Save Start (Home) Point -Press and hold for 2 seconds (buzzer sounds) to save the start/home point. If you forget to save a start point at a new fishing location, the home icon on the screen will flash and the buzzer will sound.

B. Power On/Off (Handset). Long press for 3 seconds to turn the handset on or off (buzzer sounds). The handset will automatically power off after 30 minutes without operation. When the handset is ON, a short press (1 second) turns on the screen backlight.

C. Save Fishing Point. Use the left joystick to select the desired fishing-point number. Press and hold for 2 seconds (buzzer sounds) to save. The selected fishing-point number turns blue after saving.

D. Left Joystick. Moves the on-screen cursor to select fishing spots.

(+) with combination key: Adjust sonar sensitivity.

Controller Functions contd.

E. Right Joystick – Manual Boat Control

- ↑ Forward ↓ Backward ← Turn left → Turn right ↖ Forward-left ↗ Forward-right
- Pulling the joystick down once stops Cruise or GPS Auto modes.

F. Combination Key

Used together with other keys for additional functions (e.g., sonar sensitivity).

G. Speed Key (4 Speeds). Short press to toggle speed levels: 1 → 2 → 3 → 4, repeating each press.

H. Menu / Unit Key. Opens menu settings or switches measurement units (depending on mode).

I. Boat Light. Short press: ON, press again: OFF.

Long press (2 seconds) while switching on the boat: rebuilds signal.

J. Open Bait Door. Short press to open the hopper door.

Do NOT operate frequently—minimum 1 minute between operations.

Do not open/close the door by hand. If the door does not open, press Close once, then press Open again.

K. Close Bait Door. Short press to close the hopper door.

Follow the same safety rules as above (minimum 1-minute interval).

If the door does not close, press Open once, then press Close again.

Controller Functions contd.

L. Hook Release (Optional). Short press to release the hook.

Minimum 1-minute interval between operations.

M. Cruise Mode. Short press once to start Cruise at the selected speed.

Only left/right steering can be controlled during cruise.

Pull the right joystick down once to stop the boat.

N. GPS Auto Mode

1. Select the saved fishing point using the left joystick.
2. Short press once to activate Auto-Navigation to that point
3. Buzzer sounds and the point number turns red.
4. When the boat arrives, it will stop
5. Buzzer sounds and the point number turns blue.
6. Pull the right joystick down once to stop the boat during GPS Auto if needed.

Auto Drop-Off + Return (Long Press)

After selecting a saved point, long press for 2 seconds:

- The boat will go to the saved point automatically
- Drop bait
- Then return to the start point automatically

O. Back (Return to Home). When the boat has stopped anywhere within signal range, short press once and the boat will automatically return to the saved start point.

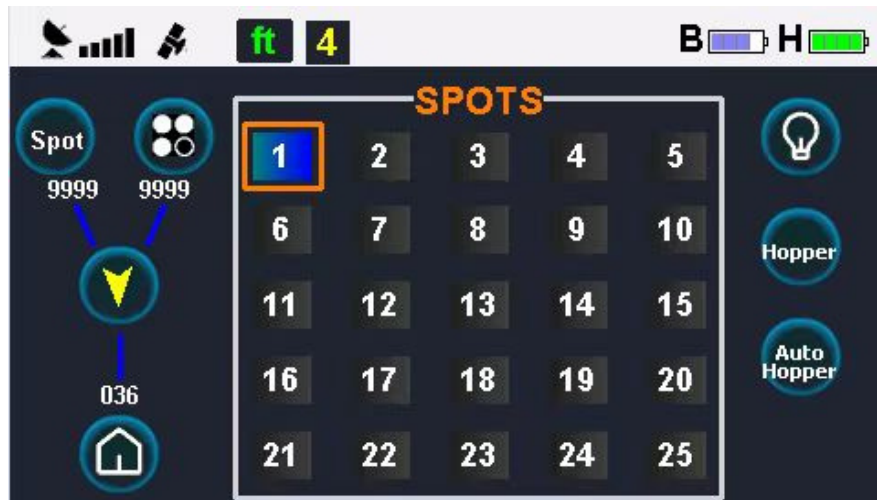
P. Fishing Point Selection. Used to choose or confirm fishing points on the display system.

Q. Type-C Charging Socket, For charging the handset.

Controller Functions contd.

R. Display

Shows battery levels, GPS points, home point, sonar readings (if applicable), modes, and operational status.



7. Handset for UltraCat S with Fishfinder Option

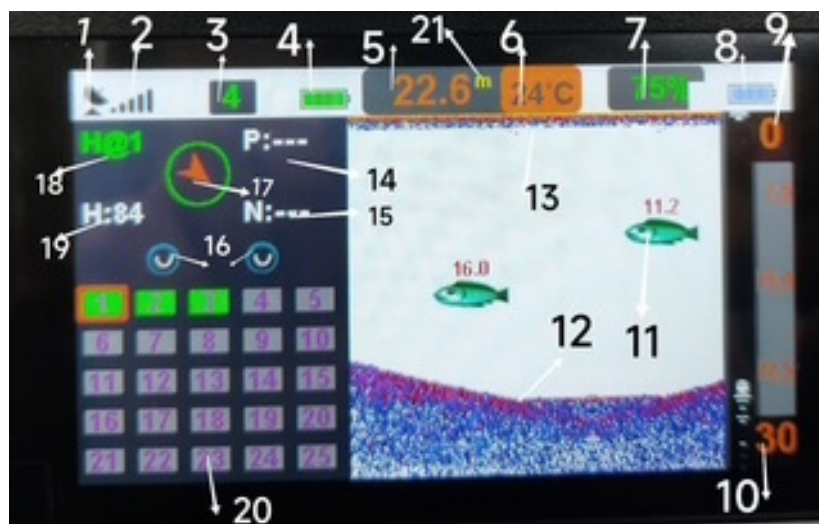
Controller Functions

As per Handset for Ultra S Model with the addition of Fishfinder Options indicated in as 'L' in image below.



Controller Functions

- 1 Satellite when handset build in connection with boat icon shown in Black. If not icon shown in Red.
- 2 Signal strength of radio for handset.
- 3 Speed gear - 1:4 ratio.
4. Handset Battery Power. Green icon when full battery. Red when low power and buzzer.
5. Depth reading.
6. Water temperature.
7. Sensitivity. Normally approx 75%.
8. Boat battery power icon. Full 12.6V/Blue. Low 9.6V/Red/Buzzer. Boat will return home and must be recharged before use.
9. Depth range at top
10. Depth range at bottom.
- 11 Fish symbol.
12. Structure
13. Surface clutter.
14. P: Distance travelled by boat from saved point.
15. N: Distance from boat to GPS auto, i.e. target firing point.
- 16 Hopper door icons. Rectangle around icon displayed when auto drop bait function used.
17. Indicator of boat direction.
18. Home point. If you forget to save start point, the home icon on screen will flash and buzzer. Green icon indicates home saved.
19. H: Distance from start point (home).
20. Unit of measurement - m/inch



Display Indicators and Handset

1. Handset Signal Indicator - shows the status of the wireless connection.
2. Boat Signal Icons - Black: Handset is connected to the boat/White: No connection between handset and boat
3. Satellite Signal Icon: Black: Sufficient satellite (GPS) signal/Red: No satellite signal
4. Distance Unit: Displayed in meters (m) or feet (ft).
5. Speed Gear: Shows current speed level (1–4).
6. Boat Battery Power Icon: Full (12.6V): Blue Low (9.6V): Red (When red, a buzzer sounds and the boat automatically returns to home). The battery must be charged immediately.
7. Handset Battery Power Icon: Green: Full - Red: Low, with buzzer alert
8. Distance to GPS Auto Target - Shows how far the boat is from the selected GPS fishing point.
9. Distance to Cursor Target - Distance from the boat to the fishing point currently highlighted by the cursor.
10. Direction of Boat - shows the boat's heading relative to the handset.
11. Distance from Start Point (Home): Displays current distance from the saved start position.
12. Start Point (Home) Icon - Indicates the home point status on the display.
13. Boat Light Icon - Shows whether the front/rear lights are ON or OFF.
14. Hopper Door Indicator - Shows HOPPER when the door is closed. Icon empty when the door is open.
15. Hook Release Indicator (Optional) - Appears when a hook release system is installed.
16. Fishing Point Status
 - Grey background: Normal
 - Blue background: Saved fishing point
 - Red background: GPS Auto is navigating to this point

Warnings

A. Warnings

A. GPS & Satellite Notes

1. Satellite signal strength can vary with weather and location. Initial signal lock may take 1–5 minutes from turning on boat to ensure stability of signal.
2. Save the starting point 3 minutes after turning on the handset and boat for best accuracy.
3. Weak satellite lock may result in large GPS errors. Strong signal accuracy is ~2 meters.
4. Do not use indoors—GPS signal is weak.
5. Avoid using the boat near transmission towers, high-voltage substations, or strong electromagnetic fields—GPS will be seriously affected.
6. The antenna attracts lightning—never use during thunderstorms.
7. Do not use the equipment in explosive or blasting zones.
8. The electronic compass may be affected by electromagnetic interference—avoid metal mines, high-voltage wires, or magnetic fields.
9. After use, clean the boat and leave the battery compartment open in a ventilated area to dry.
10. When charging the boat directly, open the battery cover, or remove the battery for charging.

Warnings

B. Lights

Do not look directly into the front lights at close range—they are extremely bright and may damage your eyes.

C. Hopper Door

Do not open or close the hopper door by hand. Only use the remote-control buttons.

D. Rig Release (Optional)

a. Insert your line, rig, or hook into the rear holder.

b. Short press the L key to drop the rig—the port navigation light flashes at the same time.

Minimum 1-minute interval between releases.

E. Safety

The bait boat and accessories are not toys. Keep away from children.

GYRO Function Notes

This boat has an internal GYRO stabilizer to keep it running straight.

When steering out or returning, you may notice if pressing Cruise or Back that the boat only turns slightly and then stops. This happens when the GYRO is correcting the boat due to water flow or one propeller being restricted by debris.

- To reset operation:

1. Pull the right joystick down once

2. Wait 3 seconds

3. Press Cruise or Back again

4. Repeat this up to three times if needed. The boat will then function normally.

General Operating Notes

- Always turn ON the handset first, then turn on the boat.
- Always turn OFF the boat first, then turn off the handset.
- This ensures you never lose control, especially when the handset battery is low.
- Steering is controlled by adjusting the right joystick.
- Avoid pushing the joystick fully too quickly—it increases stress on the electronics.
- At full speed, runtime is approximately 2–3 hours.
- Reducing speed slightly can extend battery life to 3–4 hours.

Fail-Safe Operation

The range is 400–500m, depending on weather and conditions.

If the signal becomes weak, the boat will stop going forward and return toward the range where it can reconnect.

Additional Notes

- i. Never turn off the handset before the boat.
- ii. Repeated fast starting, stopping, and reversing consumes excess battery—keep movements smooth.
- iii. The boat is waterproof but may accumulate condensation inside. Clean with a damp cloth and store in a warm, dry location.
- iv. Fully charge all batteries after each trip. Recharge every two months during storage. Store boat batteries outside the boat.
- vi. Always Keep the transmitter dry.
- vii. Do not leave the boat in direct sunlight—the black hull absorbs heat and can become extremely hot.

General Operating Notes

Guarantee

- You are provided with a 24-month warranty from the date of purchase.
- The warranty covers:
 - Drive unit
 - Electrical and electronic components
 - Faulty materials
 - Manufacturing defects
- The warranty does not cover:
 - Batteries
 - Damage caused by improper use
 - Breakage
 - Normal wear and tear
 - Any repairs or modifications made by Angling Technics
 - Water in Handset

Important Operating Notes

1. **Switch on the boat.**
2. **When turning off, reverse the order. This ensures you always maintain control.**
3. **The remote control is not waterproof.**
4. **A waterproof protective cover is available separately.**
5. **After use, store the boat and remote in a warm, dry place to prevent moisture and condensation.**
6. **After a few days, you may pack them away safely.**
7. **Clean the bait boat using a damp cloth only.**
8. **Do not use soap, chemicals, or solvents.**
9. **After each fishing session, ensure all batteries are fully charged before storage.**
10. **If the boat will not be used for a long period, recharge all batteries every 6 months to maintain battery health.**
11. **Unscrew the boat antenna after use to avoid accidental damage.**
12. **The operating range of the boat depends on weather, interference, and environmental conditions.**
13. **Always follow the battery and charging safety instructions provided in this manual.**

Environmentally Friendly Disposal

1. **Electrical and electronic equipment must not be disposed of with household waste.**
2. **Dispose of old equipment at authorized collection centres.**
3. **Disposal for private individuals at these centres is free of charge.**
4. **Proper disposal helps recover valuable materials and prevents environmental harm.**
5. **By following these disposal guidelines, you contribute to responsible recycling and safe handling of electronic components.**

